

Finger Jointed Pine and Finger Jointed Treated Pine - Australian Compliance

Content

Fibre Selection

- Structural Products
- FSC

Structural Finger Joint Product

- AS 5068-2006
- SC3
- Testing
- AS 1720.1-1997
- Control Charts
- End Tags
- Third Party Audits

Fibre Selection - Structural Products



Structural Glue Laminated Product

- AS/NZS 1328.1:1998 n& 1328.2:1998
- Testing
- Test Results
- End Tags
- Third Party Audits

Preservative Treatment

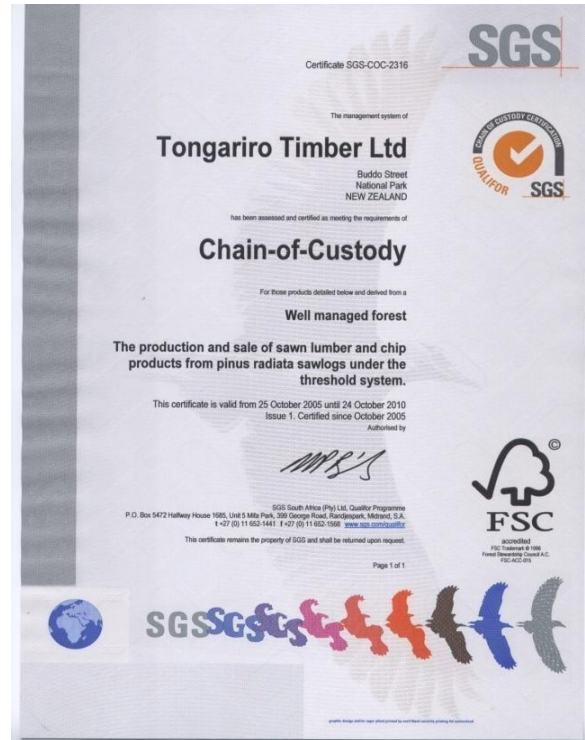
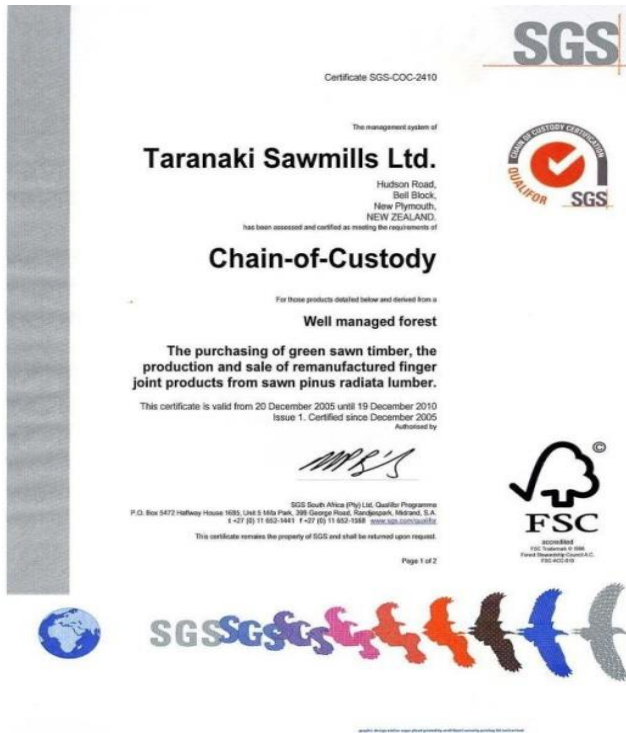
- AS/NZ 1604.5:2005
- LOSP
- Chemical Delivery
- Testing
- End Tags
- Third Party Audit

- Sampling of every log as indication of stiffness
- Segregate by structural / non structural

- Batch cut
- Segregate sawn timber

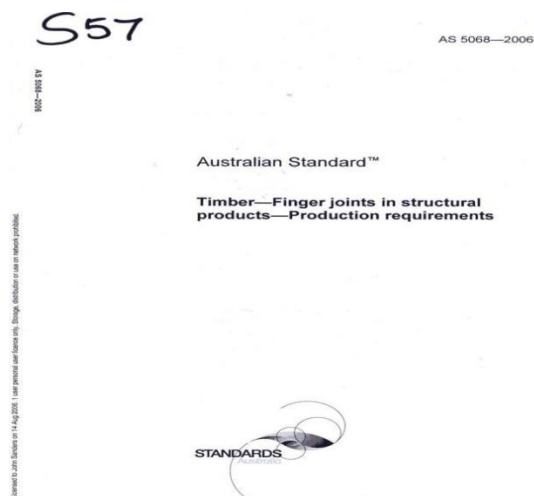
Fibre Selection

- FSC ; Environmental Certification
 - TSM has Chain-of-Custody.



Structural Finger Joint Product

- AS 5068-2006



- Compliance to AS 5068-2006
 Timber
 Finger Joints in structural products
 Production Requirements

Structural Finger Joint Product

- **Service Class 3**

- “shall be characterized by climatic conditions leading to higher moisture contents than Service Class 2 , or where timber is directly exposed to sun and / or rain”
- Glue required ‘Type 1 (classified in AS/NZS 4364) being phenol-resorcinal formaldehyde, resorcinal formaldehyde or tannin-modified resorcinal adhesives’

AS 5068—2006

6

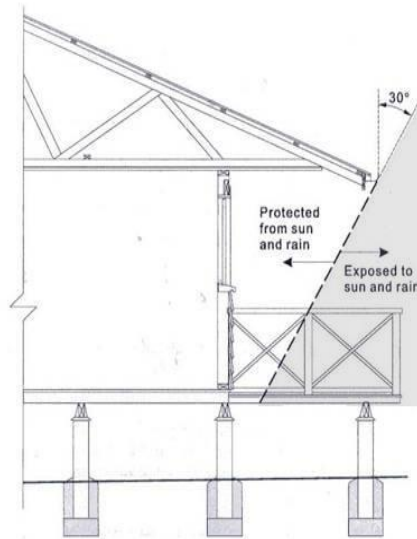


FIGURE 2 TIMBER DIRECTLY EXPOSED TO SUN AND RAIN

Structural Finger Joint Product

- Testing



- Adhesive Type –Resorcinol (Type 1)
- Finger Joint Bending Test
- Wet Conditioning



Structural Finger Joint Product

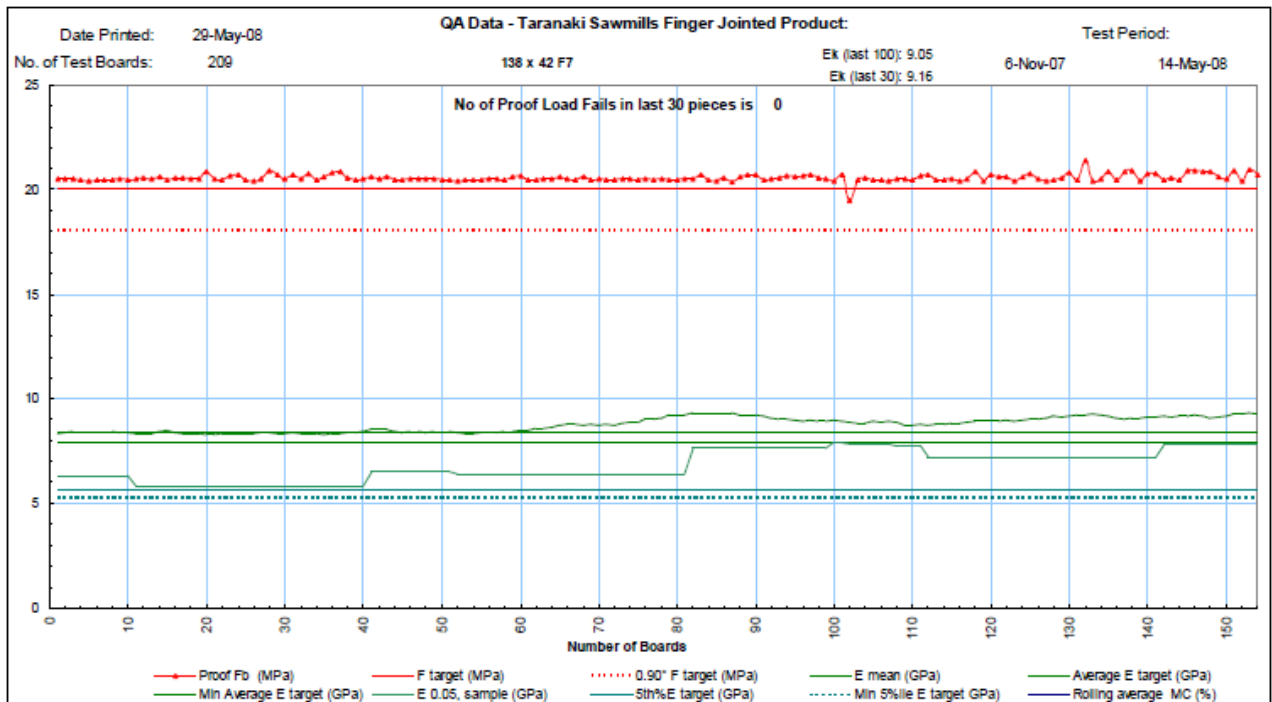
- AS 1720.1-1997

- Compliance to AS1720.1–1997 –Timber structures –Part 1: Design methods
 - Stiffness (MOE–7.9 MPa)
 - Strength (f'b –20 MPa)
- Verification Standard NZS 3622:200 Verification of Timber Properties
 - 1 piece per packet



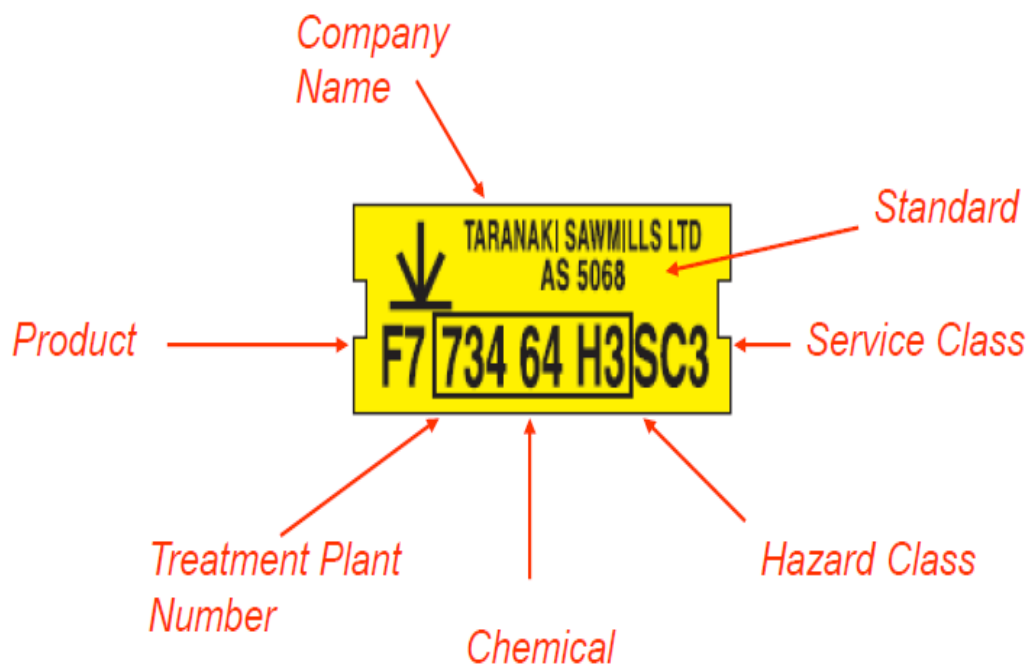
Structural Finger Joint Product

- Control Charts



Structural Finger Jointed Product

- End Tags without these details displayed you cannot claim that your product complies with the relevant Australian Standards



Structural Finger Jointed Product

- Third Party Audits
 - Grade Right
 - Three Monthly
 - Bureau Veritas
 - Six monthly



Structural Glue Laminated Products

- AS / NZS 1328.1:1998 & 1328.2:1998
- Compliance to AS / NZS.1328.1:1998 Glue Laminated Structural timber Part 1 & 2



Structural Glue Laminated Product

- Testing (1)



- Adhesive Type –
- Resorcinol (Type 1)
- Delamination Testing
- MOE Testing



Structural Glue Laminated Product

- Testing (2)

- Compliance to AS / NZS 1328
 - Stiffness (MOE – 8 GPa)
 - 10% of production



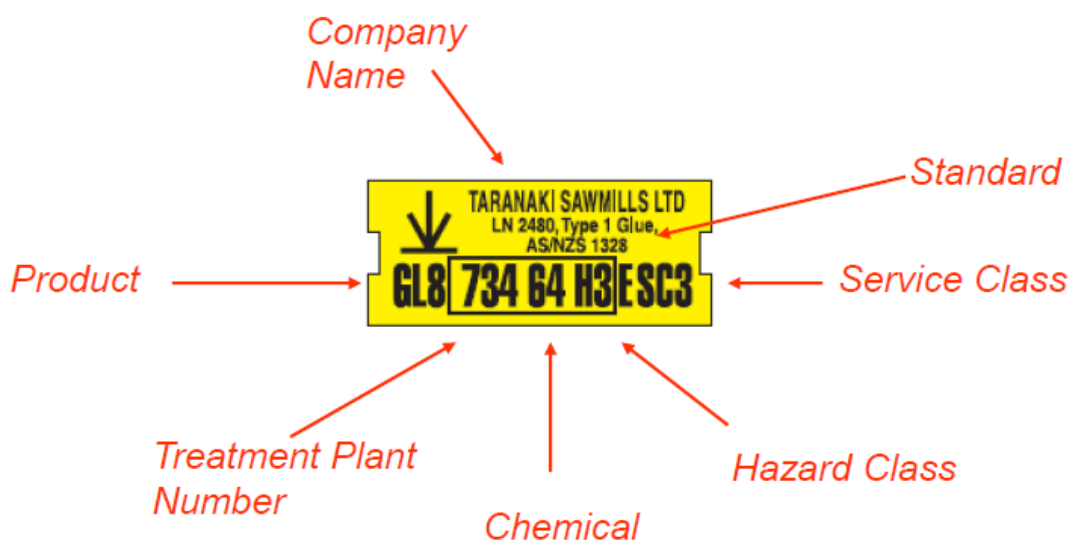
Structural Glue Laminated Product

- **Test Results**

Size	Length	Data	Total
280 x 65	4.8	Number Pass MOE	2
		Number of Samples	2
	5.4	Number Pass MOE	2
		Number of Samples	2
	6.0	Number Pass MOE	2
		Number of Samples	2
	7.2	Number Pass MOE	2
		Number of Samples	2
280 x 65 Number Pass MOE			9
280 x 65 Number of Samples			9
140x65	6	Number Pass MOE	2
		Number of Samples	2
140 x 65			2
Number Pass MOE			2

Structural Glue Laminated Product

- **End Tags** without these details displayed you cannot claim that your product complies with the relevant Australian Standards



Structural Glue Laminated Product

- Third Party Audits
 - Bureau Veritas
 - Six Monthly


BUREAU VERITAS

SCHEDULE TO PRODUCT CERTIFICATION LICENCE NO: 2480

LICENCE DETAILS	
Scheme:	Product Certification
Licensee:	Taranaki Sawmills Ltd
Address:	Hudson Road, Bell Block, New Plymouth



CONFORMANCE REQUIREMENTS	
Standard:	AS/NZS 1328.1:1998 Glued Laminated Structural Timber
Quality System:	Product Certification Quality System Requirements (QSR)

CERTIFIED MODEL OR TYPE	
SPECIES:	Radiata Pine
DESIGN STRENGTH:	GL8, F7
SERVICE GLASSES:	1, 2 & 3
ADHESIVES:	Melamine Resorcinol

Service class 3 has been approved through initial type testing.
Delamination test facility must be in place before compliance claim for Service Class 3 can be made.

Note: If JAS method is used, this must be disclosed to purchasers specifying product compliant to AS/NZS 1328.1:1998.

Rev. Date 14 May 2008	Page 1 of 1
-----------------------	-------------

Preservative Treatment

- AS / NZS 1604.5:2005
- Compliance with AS / NZS 1604.5:2005 Specifications for Preservative Treated Part 5: Glue Laminated timber products



Preservative Treatment

- LOSP



- Light Organic Solvent Preservative
 - Protim Optimum (Propiconazole, Tebuconazole and Permethrin)
 - Supplied by Osmose NZ Ltd

Preservative Treatment

- Chemical Delivery
 - Chemical Delivery
 - CoA (Certificate of Analysis) for each delivery
 - Sample of solution tested by Taranaki for every delivery
 - Monthly samples of solution in working tanks tested
 - Every 40th charge is tested (10 timber samples)
Approximately 1 every 1.5 days

Preservative Treatment

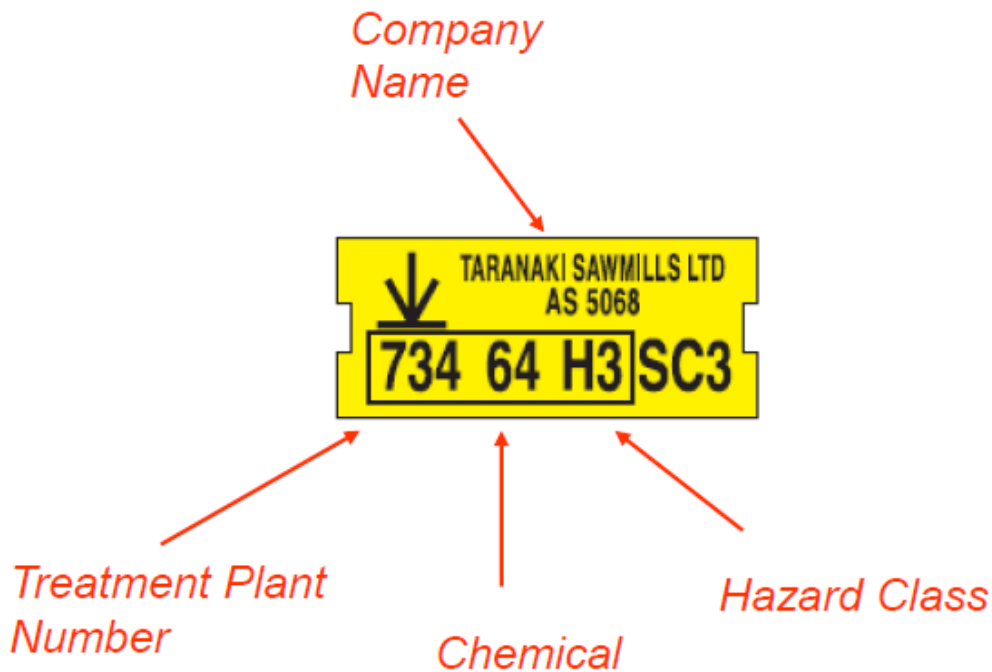
Testing

- Testing
 - Spot Tests (showing full penetration)
 - Every 40th charge is analytically tested (10 samples sent to laboratory)
Approximate 1 every 1.5 days



Preservative Treatment

- **End Tags** without these details displayed you cannot claim that your product complies with the relevant Australian Standards



Preservative Treatment

- Third Party Audit
- Timber Preservative Council
- Six monthly



Paint

- Architectural quality alkyd primer
- Supplied by PPG Industries (owner of Taubmans Australia)
- 10 year paint system warranty available when Taubmans All Weather Gloss or All Weather Low Sheen topcoats used

Paint

Specifications

- **KEEP COVERED UNTIL READY FOR USE**
 - Fill all nail holes with an exterior filler as per manufacturer's directions.
 - Note that some fillers do not require priming before use
 - Remove surface contamination and wash with clean water
 - If the primed timber has been exposed to the weather for more than two months, lightly sand to remove any chalking. Prime any base timber rub through areas with a good quality primer.
 - When using acrylic topcoat, apply one coat of a premium brand undercoat followed by two coats of a premium brand acrylic topcoat as per label directions

- When using an oil based topcoat, firstly apply a good quality undercoat followed by two coats of a premium brand alkyd topcoat as per label directions

- Notes:
 - Resin may bleed from wood in hot, sheltered conditions. To reduce the risk of this occurring it is advisable to paint in light colours and follow the above instructions
 - For better results it is recommended that a good quality acrylic based undercoat is used before topcoating
 - For good general instructions on the preparation and painting visit www.specifi.com.au

 - A TOPCOAT PAINT SYSTEM WITH A 10 YEAR GUARANTEE IS SEPERATELY AVAILABLE FROM PPG INDUSTRIES ARCHITECTURAL DIVISIONS. FOR DETAILS OF THIS GUARANTEE CONTACT PPG CUSTOMER SUPPORT BEFORE PAINTING AS FOLLOWS:

Within Australia 131686

ALWAYS REQUEST AUSTRALIAN COMPLIANT PRODUCT